

**TOOLS REQUIRED**

- 1) Tomato software
- 2) SD card reader
- 3) LAPTOP or PC with Internet connection

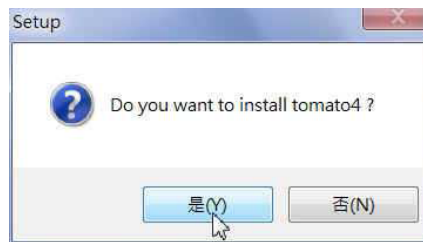
**PROCEDURE FOR NAVIGATION MAP UPGRADE (For customers in warranty only)**

**Step 1:** Download the update tool (Tomato) from below link

[http://map.polstargps2.com/fixture/SD/Tomato4/tomato4\\_Setup.exe](http://map.polstargps2.com/fixture/SD/Tomato4/tomato4_Setup.exe)



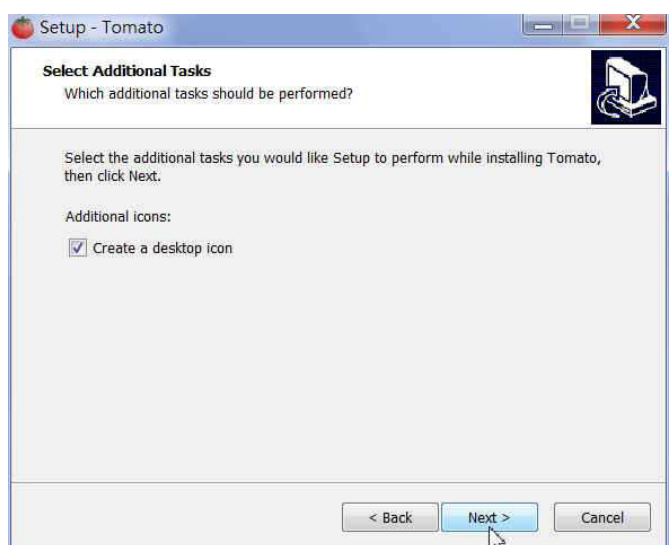
**Step 2:** Click yes to install 'Tomato'.



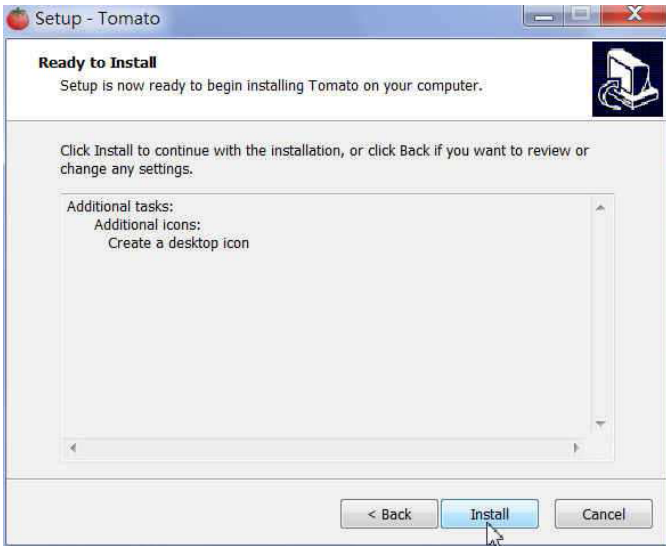
**Step 3:** Click next to finish the installation.



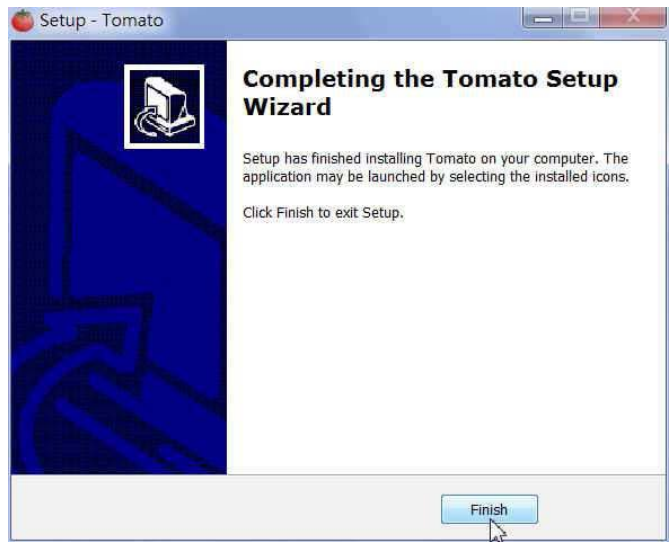
(a)



(b)



(c)



(d)

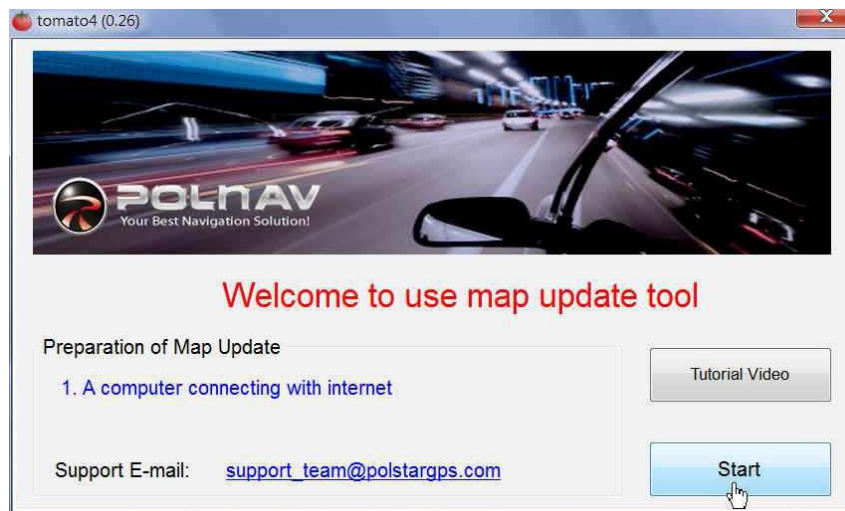
Note: If the pc did no install *Microsoft .Net Framework*, the update tool will install *Framework* automatically before installing.

**FOR WARRANTY UPGRADE**

**Step 4:** Once installed 'Tomato' double click on the icon.

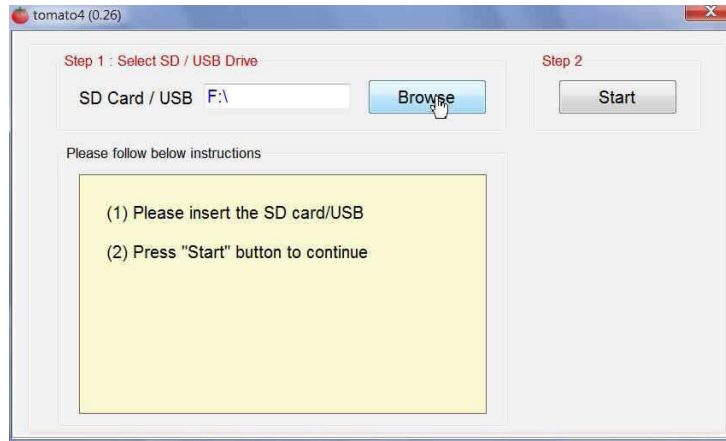


**Step 5:** In the welcome page click on 'Start' to upgrade.

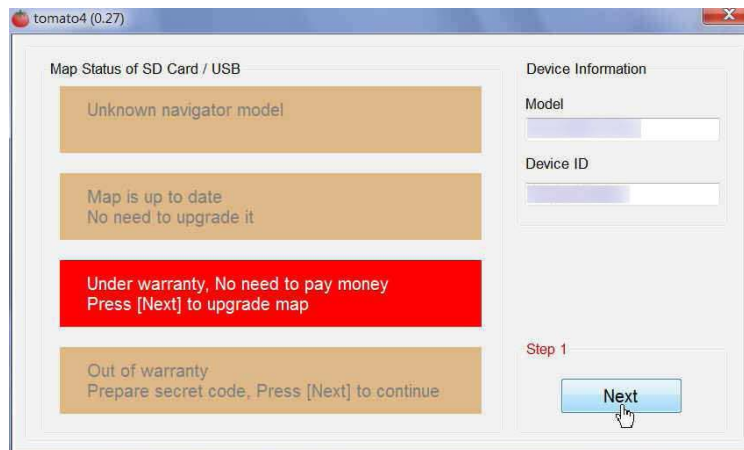


**Step 6:** Insert the Map SD card into the card reader and connect it to Laptop or PC through USB port.

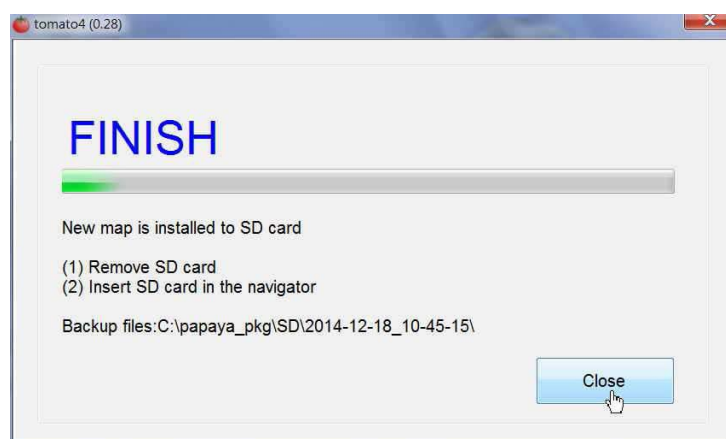
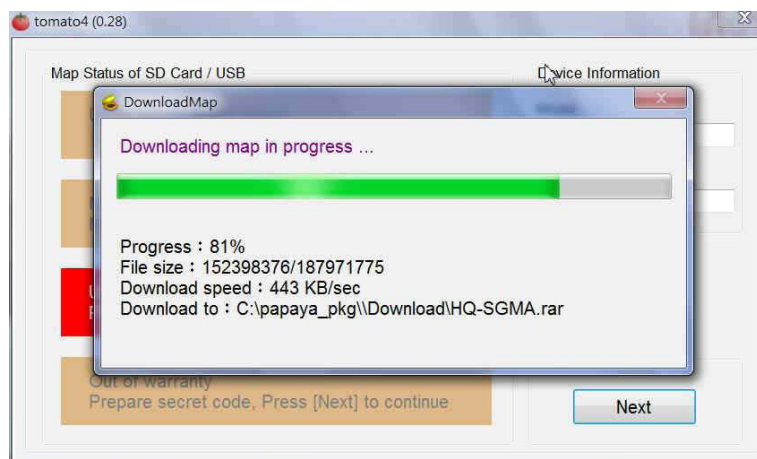
**Step 7:** Click (**Browse**)to select & chose the SD card. Click (**Start**) to verify the status of SD card



**Step 8:** For license under warranty, click **(Next)** to process Map update in steps shown below.



(i)



(ii)

Once completed remove Map SD card and insert back into the infotainment system in correct direction and turn on the infotainment system to configure and update.

**Note:** The Map data download size is 900mb and takes about an hour and half to upgrade with good internet speed.

**Note:**

For any more information / support write to [customercare@mahindrareva.com](mailto:customercare@mahindrareva.com)